

Successful conversion of 320 processing screens to AB-D 45 suspensions

The THOMAS EQUIPMENT Ltd. located in CA-Centreville (New-Brunswick), is a well-known Canadian manufacturer of earth moving and road building machinery. THOMAS has now placed their trust completely in ROSTA oscillating mountings for the suspension of their screening plants.

Fig. 1 shows the mobile processing screen from THOMAS, which is mainly used for the recycling of rubble and road asphalt. Originally, the hydraulically driven 2-deck circular screen was mounted on half-elliptical leaf springs (Fig. 2). Environmental variations, corrosion attacks and impact shock led to a high failure rate of the leaf spring suspensions, and thereby to frequent machine downtime. In continuous operation, the maintenance mechanics were replacing the spring suspensions almost every week! The screen machine was earning a reputation among road builders as being prone to suspension failure, which also had a negative effect on the sale of new machines.



Figure 2

The attention of THOMAS EQUIPMENT Ltd. was drawn to our screen mountings through an advertisement from ROSTA Inc. Canada, and the first screen machine was quickly converted to AB-D 45. After a vigorous trial period, ROSTA soon proved to be the answer to their problems, and excellent itself in continuous operation through the high insulation effect and its capacity to overload. THOMAS quickly offered all screen operators a conversion kit. By means of the clamp-on conversion kit with special brackets, the 320 „field machines“ were subsequently converted in a very simple manner (Fig. 3). It goes without saying that the AB-D 45 by ROSTA have now become a standard installation component of these screening machines, and have made this plant from THOMAS into a bestseller once again.



Figure 1



Figure 3

The new ROSTA Type AB-D screen mounting has only been on the market for 6 months and is already a bestseller!

The new, compact, high load-bearing oscillating suspension with the very positive cost : carrying capacity ratio has not only caused a furor in the few months that it has been on the market due to its high insulation value; it is much more the very simple assembly and the weight grading matched to market requirements that have given this new series of screen mountings from ROSTA a quick-start in vibration processing.

The LIEBHERR-Mischtechnik GmbH in Bad Schussenried (Germany) has recently designed a new recycling screen for a very specific market niche, the reprocessing of sewage mud and silt waste from street cleaning machines. A large demand for small, local and cost-effective recycling plants of this type has arisen, in particular due to the fact that, from 2004, this kind of waste will no longer be able to be dumped or be used as landfill material for gravel and sand pits within the EU without first being processed. The collected masses of mud can only be economically separated and divided up using the screen technology.

LIEBHERR therefore designed a very robust „screen grating“ that carries out linear oscillating movements by means of two unbalanced motors, and thereby achieves a high throughput performance. The screens are loaded with either belt conveyor installations or spontaneously with loading shovels. A requirement therefore arose for **cost-effective**



oscillating elements that are **tolerant to overloads, directionally stable, highly insulating** and **resistant to dirt** = the ideal application for the new ROSTA Type AB-D oscillating element with seven weight graduations from 600 to 16,000 N.

Figs. 1, 2 and 3 show the 1,800 kg heavy screen grating, supported on a total of 6 ROSTA Type AB-D oscillating elements, each with a carrying capacity of 2,000 to 4,000 N per support.



Figure 1



Figure 2



Figure 3

Exhibition participation of ROSTA in spring 2003



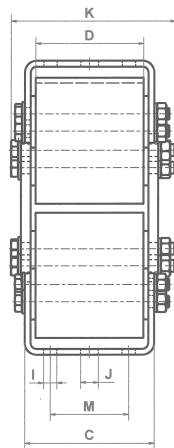
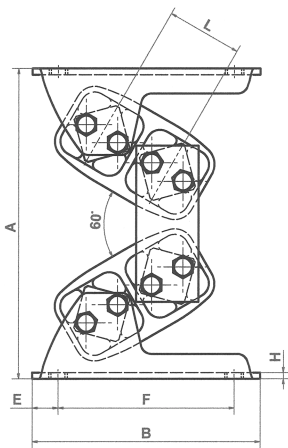
IPACK-IMA, IT-Milano
as from 4th until 8th March 2003
Booth: Hall 16/1, Booth A35
ROSTA S.r.l.
IT-20156 Milano



Hanover Fair, DE-Hanover
as from 7th until 12th April 2003
Booth: Hall 25, Booth D28
ROSTA AG
CH-5502 Hunzenschwil

Oscillating Mounting Type AB-D (dimensions)

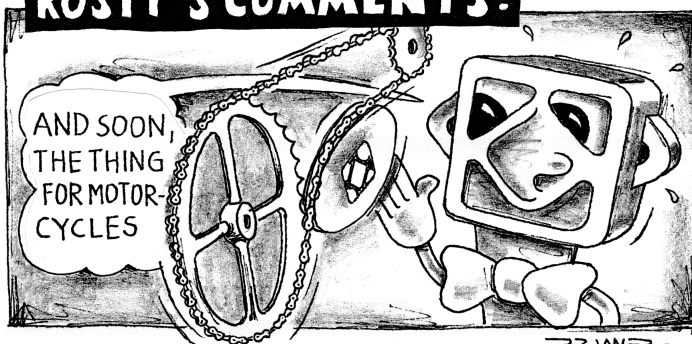
Art-No.	Type	Load in N	A un-loaded	A max. load	B	C	D	E	F	H	I	J	K	L	M	Weight in kg
07 281 000	AB-D 18	600 - 1200	137	114	115	61	50	12.5	90	3	9	9	74	31	30	1.3
07 281 001	AB-D 27	1000 - 2500	184	154	150	93	80	15	120	4	9	11	115.3	44	50	2.9
07 281 002	AB-D 38	2000 - 4000	244	198	185	118	100	17.5	150	4	11	13.5	146.4	60	70	7.5
07 281 003	AB-D 45	3000 - 6000	298	244	220	132	110	25	170	6	13.5	18	167.5	73	80	11.5
07 281 004	AB-D 50x120	4000 - 9000	329	278	235	142	120	25	185	6	13.5	18	166	78	90	22
07 281 005	AB-D 50x160	8000 - 12000	329	278	235	186	160	25	185	8	13.5	18	214	78	90	25
07 281 006	AB-D 50x200	11000 - 16000	329	278	235	226	200	25	185	8	13.5	18	260	78	90	29



*We wish you
a good start
in the year 2003!*

Represented by:

ROSTY'S COMMENTS:



Publisher:
ROSTA AG, Hauptstrasse 58
CH-5502 Hunzenschwil
Phone: +41 062 897 24 21
Telefax: +41 062 897 15 10
E-Mail: info@rosta.ch
Internet: <http://www.rosta.ch>

Copyright by ROSTA AG
Edition: d/f/e 11 000 Ex.
No. 1/2003