


















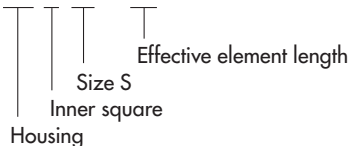


# Selection chart for rubber suspension standard elements with Rubmix 10

Inner square Housing	A Light metal profile, as from size 60 in steel	C Light metal profile	S Steel tube for plug-in connection	Accessories for housing Steel parts
DR Steel tube	<b>DR-A 15 to 50</b>  Page 1.6	<b>DR-C 15 to 50</b>  Page 1.6	<b>DR-S 11 to 50</b>  Page 1.7	<b>Bracket BR 11 to 50</b>  Page 1.7
DK Light metal profile	<b>DK-A 15 to 50</b>  Page 1.8	<b>DK-C</b> on request 	<b>DK-S 11 to 50</b>  Page 1.8	<b>Bracket BK 11 to 50</b>  Page 1.9
DW Light metal profile	<b>DW-A 15 to 38</b>  Page 1.10	<b>DW-C 15 to 38</b>  Page 1.10	<b>DW-S</b> on request 	<b>Accessories for inner square A Steel parts</b> <b>WS 11 to 50</b>  Page 1.13
DW Nodular cast iron	<b>DW-A 45 and 50</b>  Page 1.11	<b>DW-C 45 and 50</b> on request 	<b>DW-S</b> on request 	
DW Steel welded construction	<b>DW-A 60 to 100</b>  Page 1.11			
DO Light metal profile Size 50 in nodular cast iron	<b>DO-A 15 to 50</b>  Page 1.12	<b>DO-C</b> on request 	<b>DO-S</b> on request 	
Housing Specification inner squares	Ideal for alternating motions over neutral element position. For sizes DR 15–45: Fixation by means of 2 to 4 persistent threaded bars (sizes DR 27–45 also available with threaded holes).	Friction locking of the core by means of one central bolt, can be positioned in full 360° angle-range. For ideal friction locking, please remove paint cover on face side. For alternating element motion of max. ±10°.	For plug-in connection with square profile*. Plug-in length min. 2 x width across flat "C". Connection is not recommendable by alternating motions – play between the plugged squares.	* The square should be made out of bright steel, tolerance h9–h11. Possibly, the edges have to be overwinded (edge-radius in element profile max. 1.5 mm).

## Specification

### DR-A 15 x 25



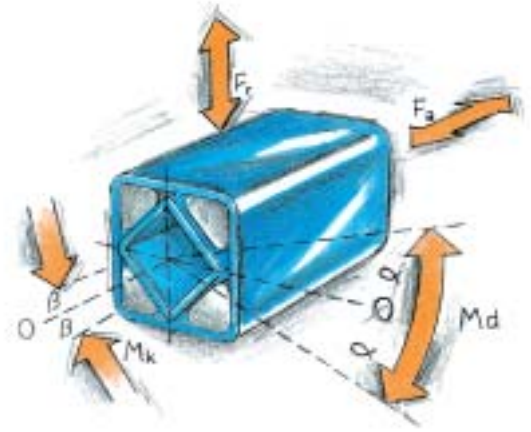
## General

- Light metal profiles: extruded profiles, seawater resistant (DIN 1725).
- Blue protection paint: water-soluble paint, coating thickness 0.04–0.08 mm.
- Fixation screws: minimum strength class of 8.8
- Welding on elements: do not weld on rubber suspensions – welding heat will affect or destroy the rubber inserts – ask for customized elements
- Most of the elements can be supplied in stainless steel version – also zinc-plated versions or special paintings are available.

Further customized elements: see examples on page 1.14 to 1.19.

# List of torque and loads

The values stated in the below mentioned list have been measured statically and are valid for the standard rubber quality "Rubmix 10". Intermediate values can be interpolated. By applications with combined dynamic forces and high angles of oscillation please consult our ROSTA general catalogue, chapter "Technology" or contact ROSTA.

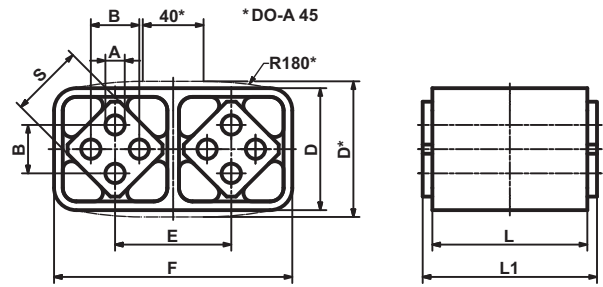


Element Nominal size x Length	Torque						Cardanic Mk [Nm] angle ±β°	Radial		Axial	
	Md [Nm] angle ±α°							Deflection ± s <sub>r</sub> [mm]	Load F <sub>r</sub> [N]	Deflection ± s <sub>a</sub> [mm]	Load F <sub>a</sub> [N]
	5°	10°	15°	20°	25°	30°					
11 x 20	0.3	0.8	1.3	2.0	2.9	4.0	0.4	200		60	
	0.4	1.2	2.0	3.1	4.3	6.0	1.1	0.25	340	0.25	80
	0.7	2.0	3.4	5.1	7.2	10.0	5.6		600		150
15 x 25	0.7	1.6	2.6	4.0	5.7	8.2	0.6	200		70	
	1.1	2.5	4.2	6.4	9.2	13.2	2.0	0.25	300	0.25	100
	1.6	3.8	6.3	9.6	13.8	19.8	5.5		500		160
18 x 30	1.9	4.5	7.5	11.0	15.0	20.6	1.6	400		80	
	3.2	7.5	12.5	18.3	25.0	34.4	7.0	0.25	700	0.25	160
	5.1	12.0	20.0	29.3	40.0	55.0	28.0		1000		300
27 x 40	4.7	10.7	17.5	26.9	39.5	57.0	3.8	800		200	
	7.0	16.0	26.3	40.3	59.3	85.5	11.5	0.5	1300	0.5	300
	11.7	26.7	43.8	67.2	98.8	142.5	48.0		2400		600
38 x 60	13.0	30.4	50.6	78.0	113.0	162.0	11.4	1500		300	
	17.3	40.5	67.5	104.0	151.0	216.0	24.7	0.5	2000	0.5	500
	26.0	60.8	101.2	156.0	226.0	324.0	76.0		3000		600
45 x 80	27.6	62.4	104.0	160.0	222.0	320.0	28.0	1900		560	
	34.5	78.0	130.0	200.0	278.0	400.0	54.0	0.5	3000	0.5	700
	51.8	117.0	195.0	300.0	420.0	600.0	140.0		4800		1000
50 x 120	51	133	250	395	570	780	80	2800		800	
	77	197	363	570	820	1115	145	0.5	4500	0.5	950
	102	260	475	745	1070	1450	250		6300		1100
	150	385	700	1100	1590	2160	1200		8600		2200
60 x 150	75	170	300	460	700	1010	90	5400		1600	
	95	220	385	610	930	1380	250	1.0	7200	1.0	2200
	140	365	630	995	1550	2240	900		9400		3200
70 x 200	140	380	650	1040	1490	2120	280	9000		2200	
	190	525	910	1470	2160	3150	1200	1.0	12'000	1.0	3600
	250	765	1315	2160	3175	4750	2200		14'000		4000
80 x 200	200	500	850	1300	1900	2700	680	10'000		2500	
	300	800	1300	2000	2900	4100	1500	1.0	15'000	1.0	3800
	400	1060	1800	2800	3900	5600	4600		19'000		4700
100 x 250	400	1080	1800	2800	4100	6300	1200	15'000		3200	
	640	1700	2900	4500	6600	10'000	4300	1.0	28'000	1.0	5800
	800	2160	3600	5600	8200	12'000	8000		38'000		7500

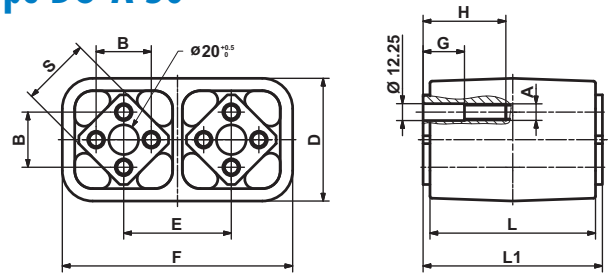


# Rubber Suspension Units

## Type DO-A 15 to 45



## Type DO-A 50



DO-A												Weight
Art. No.	Type	$\varnothing A^{+0.5}_0$	B	D	E	F	$\square S$	G	H	L	L1 $\pm 0.2$	[kg]
01 041 001	<b>DO-A 15x 25</b>									25	30	0.07
01 041 002	<b>DO-A 15x 40</b>	5	10 $\pm 0.2$	28 $\pm 0.15$	25.5	53.5 $\pm 0.2$	15	-	-	40	45	0.10
01 041 003	<b>DO-A 15x 60</b>									60	65	0.15
01 041 004	<b>DO-A 18x 30</b>									30	35	0.12
01 041 005	<b>DO-A 18x 50</b>	6	12 $\pm 0.3$	34 $\pm 0.15$	31	65 $\pm 0.2$	18	-	-	50	55	0.20
01 041 006	<b>DO-A 18x 80</b>									80	85	0.30
01 041 007	<b>DO-A 27x 40</b>									40	45	0.32
01 041 008	<b>DO-A 27x 60</b>	8	20 $\pm 0.4$	47 $\pm 0.15$	44	91 $\pm 0.2$	27	-	-	60	65	0.47
01 041 009	<b>DO-A 27x100</b>									100	105	0.78
01 041 010	<b>DO-A 38x 60</b>									60	70	0.87
01 041 011	<b>DO-A 38x 80</b>	10	25 $\pm 0.4$	63 $\pm 0.2$	60	123 $\pm 0.3$	38	-	-	80	90	1.15
01 041 012	<b>DO-A 38x120</b>									120	130	1.68
01 041 013	<b>DO-A 45x 80</b>									80	90	1.85
01 041 014	<b>DO-A 45x100</b>	12	35 $\pm 0.5$	85 $\pm 0.5$	73	150 $\pm 1$	45	-	-	100	110	2.25
01 041 015	<b>DO-A 45x150</b>									150	160	3.35
01 041 016	<b>DO-A 50x120</b>							30	60	120	130	5.50
01 041 019	<b>DO-A 50x160</b>	M12	40 $\pm 0.5$	ca. 89	78	ca. 168	50	30	60	160	170	7.40
01 041 017	<b>DO-A 50x200</b>							40	70	200	210	8.50

List of torque and loads on page 1.5.

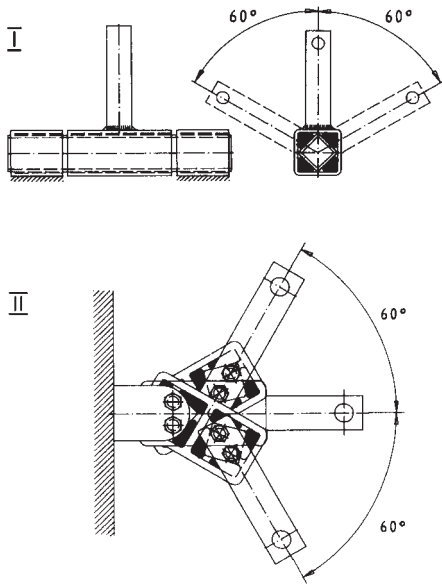
Further information to customized elements and installation examples as from page 1.14.



# Rubber Suspension Units

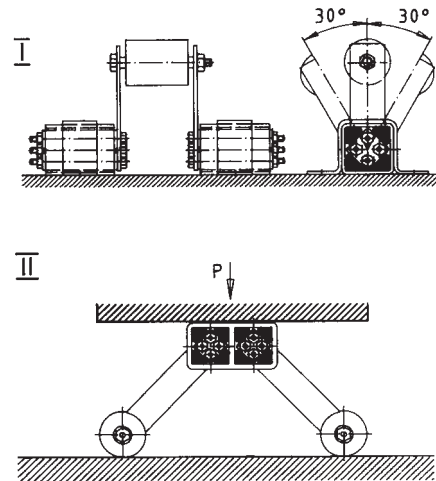
## Serial Connection

**Doubled oscillating angle**  
( $\pm 60^\circ$ ) at constant torque of a single unit.

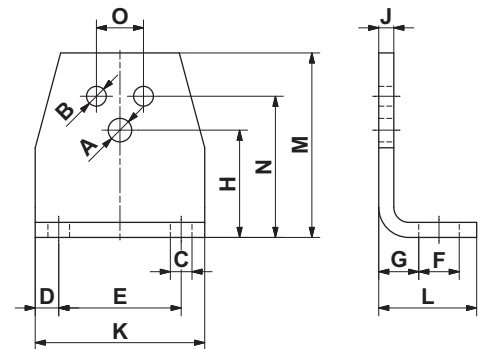


## Parallel Connection

**Doubled torque momentum**  
at constant oscillating angle ( $\pm 30^\circ$ ).



## Accessory Bracket WS



Bracket WS		Fit for tensioner devices			Fit for DR-A, DK-A, DW-A												Weight [kg]	
Art. No.	Type	SE size	$\varnothing A$	H	Element size	$\varnothing B$	N	O	C	D	E	F	G	J	K	L		M
06 590 001	WS 11-15	11	6.5	27	15	5.5	35	10	7	7.5	30	13	11.5	4	45	30	46	0.08
06 590 002	WS 15-18	15	8.5	34	18	6.5	44	12	7	7.5	40	13	13.5	5	55	32	58	0.15
06 590 003	WS 18-27	18	10.5	43	27	8.5	55	20	9.5	10	50	15.5	16.5	6	70	38	74	0.28
06 590 004	WS 27-38	27	12.5	57	38	10.5	75	25	11.5	12.5	65	21.5	21	8	90	52	98	0.70
06 590 005	WS 38-45	38	16.5	66	45	12.5	85	35	14	15	80	24	21	8	110	55	116	0.90
06 590 006	WS 45-50	45	20.5	80	50	12.5	110	40	18	20	100	30	26	10	140	66	140	1.80