


















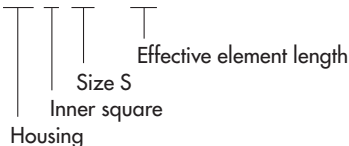


Selection chart for rubber suspension standard elements with Rubmix 10

Inner square Housing	A Light metal profile, as from size 60 in steel	C Light metal profile	S Steel tube for plug-in connection	Accessories for housing Steel parts
DR Steel tube	DR-A 15 to 50  Page 1.6	DR-C 15 to 50  Page 1.6	DR-S 11 to 50  Page 1.7	Bracket BR 11 to 50  Page 1.7
DK Light metal profile	DK-A 15 to 50  Page 1.8	DK-C on request 	DK-S 11 to 50  Page 1.8	Bracket BK 11 to 50  Page 1.9
DW Light metal profile	DW-A 15 to 38  Page 1.10	DW-C 15 to 38  Page 1.10	DW-S on request 	Accessories for inner square A Steel parts WS 11 to 50  Page 1.13
DW Nodular cast iron	DW-A 45 and 50  Page 1.11	DW-C 45 and 50 on request 	DW-S on request 	
DW Steel welded construction	DW-A 60 to 100  Page 1.11			
DO Light metal profile Size 50 in nodular cast iron	DO-A 15 to 50  Page 1.12	DO-C on request 	DO-S on request 	
Housing Specification inner squares	Ideal for alternating motions over neutral element position. For sizes DR 15–45: Fixation by means of 2 to 4 persistent threaded bars (sizes DR 27–45 also available with threaded holes).	Friction locking of the core by means of one central bolt, can be positioned in full 360° angle-range. For ideal friction locking, please remove paint cover on face side. For alternating element motion of max. ±10°.	For plug-in connection with square profile*. Plug-in length min. 2 x width across flat "C". Connection is not recommendable by alternating motions – play between the plugged squares.	* The square should be made out of bright steel, tolerance h9–h11. Possibly, the edges have to be overwinded (edge-radius in element profile max. 1.5 mm).

Specification

DR-A 15 x 25



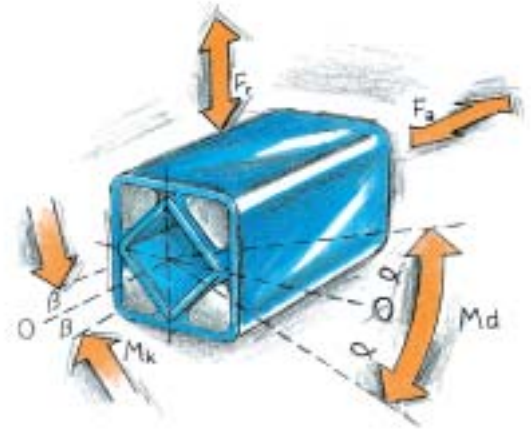
General

- Light metal profiles: extruded profiles, seawater resistant (DIN 1725).
- Blue protection paint: water-soluble paint, coating thickness 0.04–0.08 mm.
- Fixation screws: minimum strength class of 8.8
- Welding on elements: do not weld on rubber suspensions – welding heat will affect or destroy the rubber inserts – ask for customized elements
- Most of the elements can be supplied in stainless steel version – also zinc-plated versions or special paintings are available.

Further customized elements: see examples on page 1.14 to 1.19.

List of torque and loads

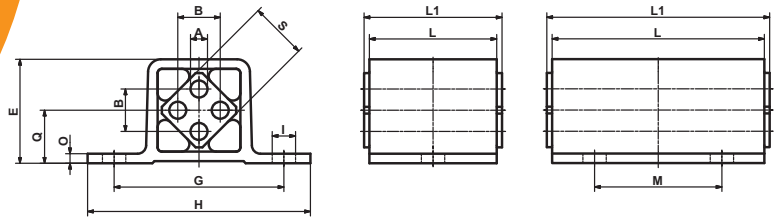
The values stated in the below mentioned list have been measured statically and are valid for the standard rubber quality "Rubmix 10". Intermediate values can be interpolated. By applications with combined dynamic forces and high angles of oscillation please consult our ROSTA general catalogue, chapter "Technology" or contact ROSTA.



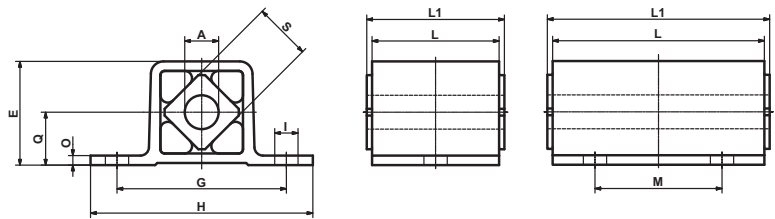
Element Nominal size x Length	Torque						Cardanic Mk [Nm] angle ±β°	Radial		Axial	
	Md [Nm] angle ±α°							Deflection ± s _r [mm]	Load F _r [N]	Deflection ± s _a [mm]	Load F _a [N]
	5°	10°	15°	20°	25°	30°					
11 x 20	0.3	0.8	1.3	2.0	2.9	4.0	0.4		200		60
	0.4	1.2	2.0	3.1	4.3	6.0	1.1	0.25	340	0.25	80
	0.7	2.0	3.4	5.1	7.2	10.0	5.6		600		150
15 x 25	0.7	1.6	2.6	4.0	5.7	8.2	0.6		200		70
	1.1	2.5	4.2	6.4	9.2	13.2	2.0	0.25	300	0.25	100
	1.6	3.8	6.3	9.6	13.8	19.8	5.5		500		160
18 x 30	1.9	4.5	7.5	11.0	15.0	20.6	1.6		400		80
	3.2	7.5	12.5	18.3	25.0	34.4	7.0	0.25	700	0.25	160
	5.1	12.0	20.0	29.3	40.0	55.0	28.0		1000		300
27 x 40	4.7	10.7	17.5	26.9	39.5	57.0	3.8		800		200
	7.0	16.0	26.3	40.3	59.3	85.5	11.5	0.5	1300	0.5	300
	11.7	26.7	43.8	67.2	98.8	142.5	48.0		2400		600
38 x 60	13.0	30.4	50.6	78.0	113.0	162.0	11.4		1500		300
	17.3	40.5	67.5	104.0	151.0	216.0	24.7	0.5	2000	0.5	500
	26.0	60.8	101.2	156.0	226.0	324.0	76.0		3000		600
45 x 80	27.6	62.4	104.0	160.0	222.0	320.0	28.0		1900		560
	34.5	78.0	130.0	200.0	278.0	400.0	54.0	0.5	3000	0.5	700
	51.8	117.0	195.0	300.0	420.0	600.0	140.0		4800		1000
50 x 120	51	133	250	395	570	780	80		2800		800
	77	197	363	570	820	1115	145	0.5	4500	0.5	950
	102	260	475	745	1070	1450	250		6300		1100
	150	385	700	1100	1590	2160	1200		8600		2200
60 x 150	75	170	300	460	700	1010	90				5400
60 x 200	95	220	385	610	930	1380	250	1.0	7200	1.0	2200
	140	365	630	995	1550	2240	900		9400		3200
	70 x 200	140	380	650	1040	1490	2120	280		9000	
70 x 300	190	525	910	1470	2160	3150	1200	1.0	12'000	1.0	3600
	250	765	1315	2160	3175	4750	2200		14'000		4000
	80 x 200	200	500	850	1300	1900	2700	680		10'000	
80 x 300	300	800	1300	2000	2900	4100	1500	1.0	15'000	1.0	3800
	400	1060	1800	2800	3900	5600	4600		19'000		4700
	100 x 250	400	1080	1800	2800	4100	6300	1200		15'000	
100 x 400	640	1700	2900	4500	6600	10'000	4300	1.0	28'000	1.0	5800
	800	2160	3600	5600	8200	12'000	8000		38'000		7500

Rubber Suspension Units

Type DW-A 15 to 38



Type DW-C 15 to 38



DW-A 15 to 38				DW-C 15 to 38											Weight [kg]		
Art. No.	Type	$\varnothing A^{+0.5}_0$	B	Art. No.	Type	$\varnothing A$	E	G	H	$\varnothing l$	O	Q	S	L		$L1^{0}_{-0.3}$	M
01 101 016	DW-A 15x 25			01 121 101	DW-C 15x 25									25	30	-	0.05
01 101 017	DW-A 15x 40	5	10 ±0.2	01 121 102	DW-C 15x 40	10 ^{+0.4} _{+0.2}	29	50	65	7	3	15	15	40	45	-	0.07
01 101 018	DW-A 15x 60			01 121 103	DW-C 15x 60									60	65	40	0.11
01 101 019	DW-A 18x 30			01 121 104	DW-C 18x 30									30	35	-	0.08
01 101 020	DW-A 18x 50	6	12 ±0.3	01 121 105	DW-C 18x 50	13 ⁰ _{-0.2}	35	60	80	9	3.5	18	18	50	55	-	0.13
01 101 021	DW-A 18x 80			01 121 106	DW-C 18x 80									80	85	50	0.21
01 101 022	DW-A 27x 40			01 121 107	DW-C 27x 40									40	45	-	0.21
01 101 023	DW-A 27x 60	8	20 ±0.4	01 121 108	DW-C 27x 60	16 ^{+0.5} _{+0.3}	49	80	105	11	4.5	25	27	60	65	-	0.31
01 101 024	DW-A 27x100			01 121 109	DW-C 27x100									100	105	60	0.52
01 101 025	DW-A 38x 60			01 121 110	DW-C 38x 60									60	70	-	0.59
01 101 026	DW-A 38x 80	10	25 ±0.4	01 121 111	DW-C 38x 80	20 ^{+0.5} _{+0.2}	67	100	125	13	6	34	38	80	90	40	0.77
01 101 027	DW-A 38x120			01 121 112	DW-C 38x120									120	130	80	1.15

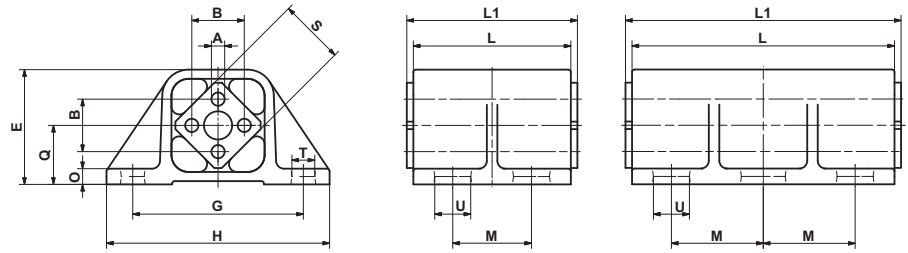
List of torque and loads on page 1.5.

Further information to customized elements and installation examples as from page 1.14.



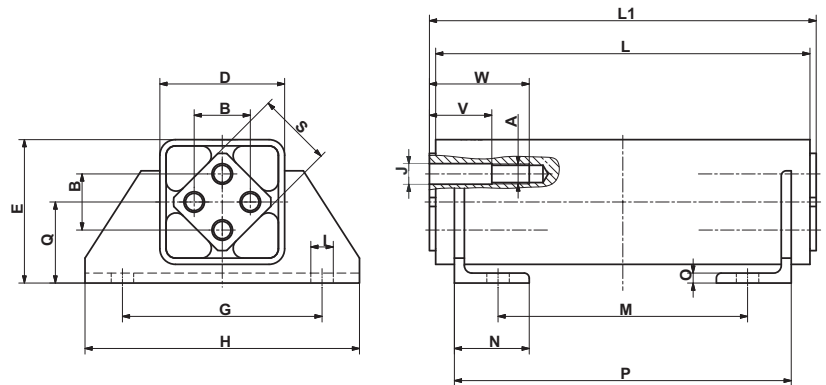
Rubber Suspension Units

Type DW-A 45 and 50



DW-A 45 and 50		A	B ±0.5	E	G	H	O	Q	□S	T	U	L	L1 ±0.2	M	Weight [kg]
Art. No.	Type														
01 101 015	DW-A 45x100	∅12 ^{+0.5}	35	80	115	145	8	41	45	13	20	100	110	65	2.9
01 101 013	DW-A 50x120											120	130	60	3.7
01 101 028	DW-A 50x160	M12x40	40	88	130	170	12	45	50	17	27	160	170	70	5.0
01 101 014	DW-A 50x200											200	210	70	6.1

Type DW-A 60 to 100



DW-A 60 to 100		A	B	D	E	G	H	∅I	∅J	N	O	Q	□S	V	W	L	L1 ±0.2	M	P	Weight [kg]
01 101 031	DW-A 60x150													40	70	150	160	60	130	8.9
01 101 032	DW-A 60x200	M16	45	100	115	160	220	18	16.5	60	8	65	60	50	80	200	210	100	170	11.1
01 101 033	DW-A 60x300													50	80	300	310	200	270	15.9
01 101 034	DW-A 70x200															200	210	100	170	15.4
01 101 035	DW-A 70x300	M20	50	120	140	200	260	22	20.2	65	9	80	70	50	90	300	310	200	270	21.7
01 101 036	DW-A 70x400															400	410	300	370	28.2
01 101 037	DW-A 80x200															200	210	80	170	21.7
01 101 038	DW-A 80x300	M20	60	136	153	220	280	22	20.5	80	10	85	80	50	90	300	310	180	270	30.4
01 101 039	DW-A 80x400															400	410	280	370	39.4
01 101 040	DW-A 100x250															250	260	110	220	43.8
01 101 041	DW-A 100x400	M24	75	170	195	300	380	26	25	100	12	110	100	50	100	400	410	260	370	64.7
01 101 042	DW-A 100x500															500	510	360	470	78.7

List of torque and loads on page 1.5.

Further information to customized elements and installation examples as from page 1.14.