








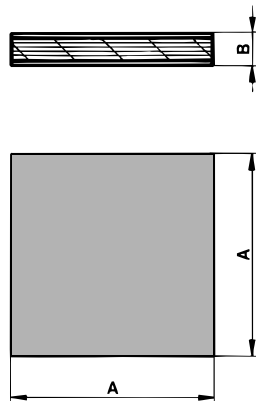
# Selection table for Anti-vibration Mounts

| Type                | Description   | Details                | Illustration  |
|---------------------|---|------------------------|---|
| <b>ESL</b>          | <b>Anti-vibration Mounts</b> for the absorption of tensile, pressure and shear load. Also ideal for wall and ceiling installations.<br><b>8 load sizes from 200 N to 19'000 N per mount.</b><br>Natural frequency between 3,5 – 8 Hz. Mounts are mainly used for overcritical machine installations (machine frequency > mount frequency).                          | Page<br>3.8 –<br>3.9   |    |
| <b>V</b>            | <b>Anti-vibration Mounts</b> for the absorption of tensile, pressure and shear load. Also ideal for wall and ceiling installations.<br><b>6 load sizes from 300 N to 12'000 N per mount.</b><br>Natural frequency between 10 – 30 Hz. Mounts can be used for subcritical machine installations (machine frequency < mount frequency).                               | Page<br>3.10 –<br>3.11 |    |
| <b>N</b>            | <b>Mounting Feets</b> consisting of insulating plate, glued-on top cover with built-in levelling jackscrew with spherical joint for compensation of up to 5° of floor unevenness. Insulating plate oil- and acid-proof.<br><b>3 load sizes from 1'500 N to 20'000 N per mount.</b><br>Natural frequency between 19 – 25 Hz.   | Page<br>3.12           |    |
| <b>NOX</b>          | <b>Mounting Feets</b> consisting of insulating plate, <b>stainless steel</b> glued-on top cover with built-in <b>stainless</b> levelling jackscrew with spherical joint for compensation of up to 5° of floor unevenness. Insulating plate oil- and acid-proof.<br><b>2 load sizes from 5'000 N to 20'000 N per mount.</b><br>Natural frequency between 19 – 22 Hz. | Page<br>3.12           |   |
| <b>Base plate P</b> | <b>Accessories:</b> For all N and NOX mounting feet light metal cast <b>base plates</b> are available for the compensation of possible shear loads and/or for the positioning of the installation on the floor.   | Page<br>3.12           |  |
| <b>ISCOL</b>        | <b>Adhesive cushioning plates</b> , self-adhesive plates for the installation of smaller machines/equipments. Plates oil- and acid-proof. (Adhesive power can be increased by moistening the plate with nitro thinner.)   | Page<br>3.13           |  |
| <b>ISCOL U</b>      | <b>Adhesive cushioning plates</b> , self-adhesive plates with glued-on cast cover. With central hollow in cover for the positioning of the levelling jackscrew – also with lateral stop bar for machine positioning.  | Page<br>3.13           |  |

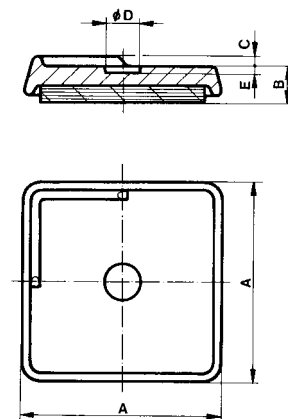
Further information to customized elements and installation examples as from page 3.14.

# Adhesive cushioning plates

## Type ISOCOL

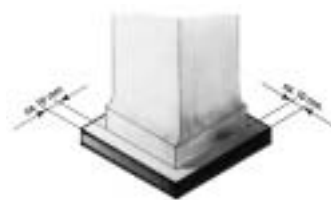


## Type ISOCOL U



| Art. No.   | Type               | Load<br>Gmin. – Gmax.<br>[N] | Natural frequency<br>Gmin. – Gmax.<br>[Hz] |     |    |   |    |   | Weight<br>[kg] | Material structure                                       |
|------------|--------------------|------------------------------|--|-----|----|---|----|---|----------------|--|
|            |                    |                              |  | A   | B  | C | øD | E |                |  |
| 05 030 001 | <b>ISOCOL 50</b>   | 500 – 1'500                  | 25 – 16                                    | 50  | 8  | - | -  | - | 0.02           | Rubber NBR/SBR with 40 ShA.<br>ISOCOL U with cast cover. |
| 05 040 001 | <b>ISOCOL U 50</b> |                              |  | 60  | 14 | 3 | 11 | 2 | 0.15           |  |
| 05 030 002 | <b>ISOCOL 80</b>   | 1'200 – 3'800                | 25 – 16                                    | 80  | 8  | - | -  | - | 0.05           |  |
| 05 040 002 | <b>ISOCOL U 80</b> |                              |  | 90  | 15 | 3 | 14 | 2 | 0.40           |  |
| 05 030 003 | <b>ISOCOL 400</b>  | 32'000 – 96'000*             | 25 – 16                                    | 400 | 8  | - | -  | - | 1.30           |  |

## Installation Guidelines



In order to obtain optimal stabilisation of the machine, it is recommended to allow the ISOCOL plates to protrude approx. 10 mm from the machine base. The single plates must be mounted such as the load is evenly distributed.



In cases where levelling is not necessary the ISOCOL U elements can be layed directly under the machine base, up to the lateral stops. Additional fixation is not necessary.



In case the machine frame includes a levelling screw, the central hollow of the ISOCOL U mounting is placed directly under the screw, which allows the accurate levelling.

## Applications

For extremely low installation situations, for the damping of vibrations and solid-borne noise, under air conditioning plants, heating boilers, pumps, office machines, laboratory equipment, wood working machines and workshop equipment, etc.

## Notice

The deflection of the cushioning plates by the mentioned max. catalogue load capacities is 1.5 mm.

\* Besides the mentioned catalogue dimensions, these cushioning plates are also available in sheet-dimensions 400x400 mm = ISOCOL 400. Relevant footprint shapes can easily be cutted out by means of carpet cutters. Calculation of load capacity with 20 to 60 N/cm<sup>2</sup>.

For further information to customized elements and installation examples as from page 3.14.